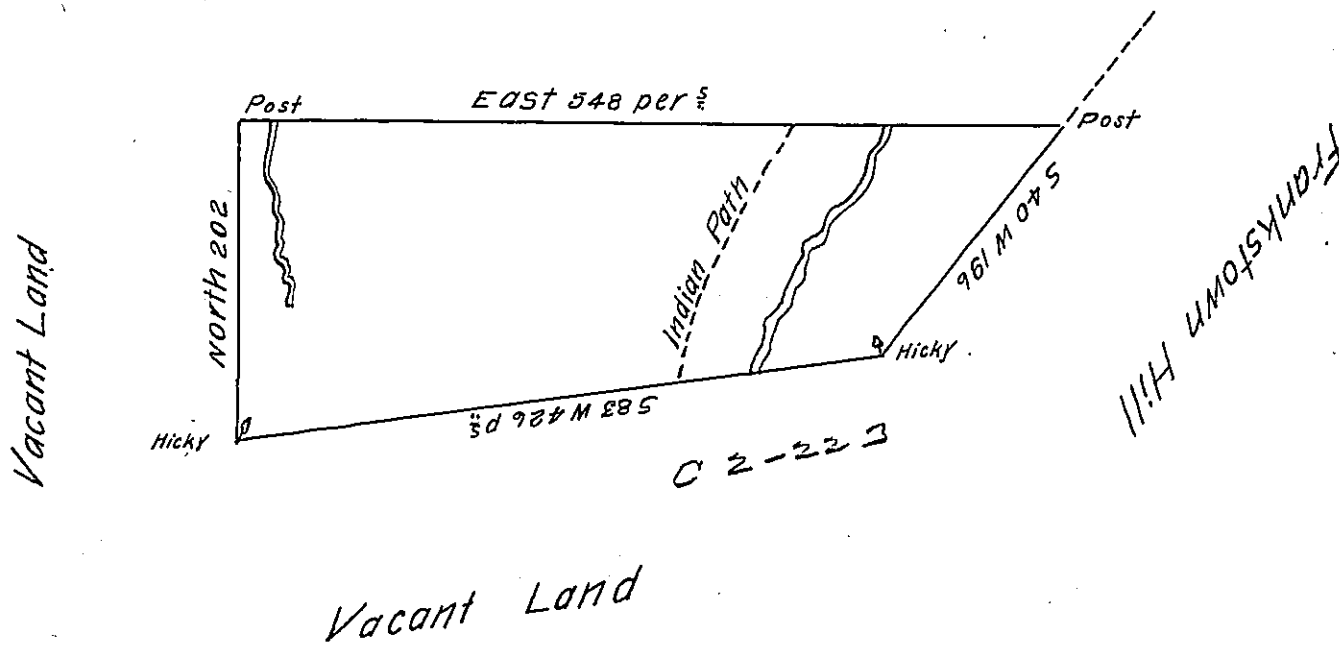


John Baynton & Samuel Wharton

D-287



A Draught of a tract of Land situate on the Indian Path above Franks-
town which leads to the Great Island in the County of Cumberland con-
taining four hundred and ninety three Acres & a quarter and the usual
allowance of six acres P.C. for Roads &c. Surveyed for John Bayn-
ton and Samuel Wharton in pursuance of a Warrant dated the 28th day of
July 1766

P^r Richard Tea Dep^y Survey^r

To John Lukens Esq^r Survey^r Gen^l

In testimony that the above is a copy of the original made in pursuance of
an Act of Assembly passed the 16 day of Feby 1833. I have hereunto set
my hand & the seal of said Office at Harrisburg this 21st day of
May 1850

(Seal)

John Laporte S. G.

IN TESTIMONY that the above is a copy of the original remaining on file in
the Department of Internal Affairs of Pennsylvania, made
conformably to an Act of Assembly approved the 16th day of
February, 1833, I have hereunto set my Hand and caused
the Seal of said Department to be affixed at Harrisburg,
this fourth day of January 1904.

Joseph P. Brown
Secretary of Internal Affairs.